

NF3000C-RQ2 Series (RoHS认证产品)

三相三线式 500VAC

10-300A系列产品, 三相通用型


 UL1283 (file No.E102708)
 EN60939-2 (file No.R50031313)

用途

UPS、通用变频器电源

规格

| Part No. | Rated Current | Weight | Dimensions [mm] | | | | | | | | | | | | | | |
|-----------------|---------------|--------|-----------------|-----|-----|-----|-----|-----|----|-----|-----|-----|-------------|---------|----|----|------|
| | | | A | B | C | D | E | F | G | H | J | K | L | M | N | P | |
| NF3010C-RQ2 | 10A | 1.5Kg | 160 | 150 | 135 | 120 | 120 | 90 | 32 | 85 | 65 | 20 | R2.75 L7 | dia.5.5 | M4 | M4 | fig1 |
| NF3020C-RQ2 | 20A | 1.5Kg | 160 | 150 | 135 | 120 | 120 | 90 | 32 | 85 | 65 | 20 | | dia.5.5 | M4 | M4 | |
| NF3030C-RQ2 | 30A | 1.5Kg | 160 | 150 | 135 | 120 | 120 | 90 | 32 | 85 | 65 | 20 | | dia.5.5 | M4 | M4 | |
| NF3040C-RQ2 | 40A | 2Kg | 167 | 150 | 135 | 120 | 120 | 90 | 44 | 85 | 65 | 20 | | dia.5.5 | M5 | M4 | |
| NF3050C-RQ2 | 50A | 2Kg | 167 | 150 | 135 | 120 | 120 | 90 | 44 | 85 | 65 | 20 | | dia.5.5 | M6 | M4 | |
| NF3060C-RQ2 | 60A | 3Kg | 197 | 180 | 165 | 150 | 120 | 90 | 44 | 85 | 65 | 20 | | dia.5.5 | M6 | M4 | |
| NF3080C-RQ2 | 80A | 3.6Kg | 217 | 200 | 185 | 170 | 120 | 90 | 44 | 115 | 85 | 20 | | dia.5.5 | M6 | M4 | |
| NF3100C-RQ2 | 100A | 4.6Kg | 254 | 230 | 215 | 200 | 150 | 120 | 57 | 115 | 80 | 30 | R3.25 L8 | dia.6.5 | M8 | M6 | fig2 |
| NF3150C-RQ2 | 150A | 9Kg | 314 | 300 | 280 | 260 | 200 | 170 | 57 | 130 | 90 | 35 | | dia.6.5 | M8 | M6 | |
| NF3200C-RQ2 | 200A | 16Kg | 450 | 430 | 338 | 100 | 190 | 230 | 7 | 180 | 133 | M10 | M8 | | | | fig2 |
| NF3250C-RQ2 | 250A | 16Kg | 450 | 430 | 338 | 100 | 190 | 230 | 7 | 180 | 133 | M10 | M8 | | | | |
| NF3300C-RQ2 | 300A | 23Kg | 500 | 475 | 400 | | 160 | 200 | 12 | 180 | 133 | M10 | M8 | | | | |
| Rated Voltage | 500VAC | | | | | | | | | | | | | | | | |
| Leakage Current | 3.0mA | | | | | | | | | | | | | | | | |

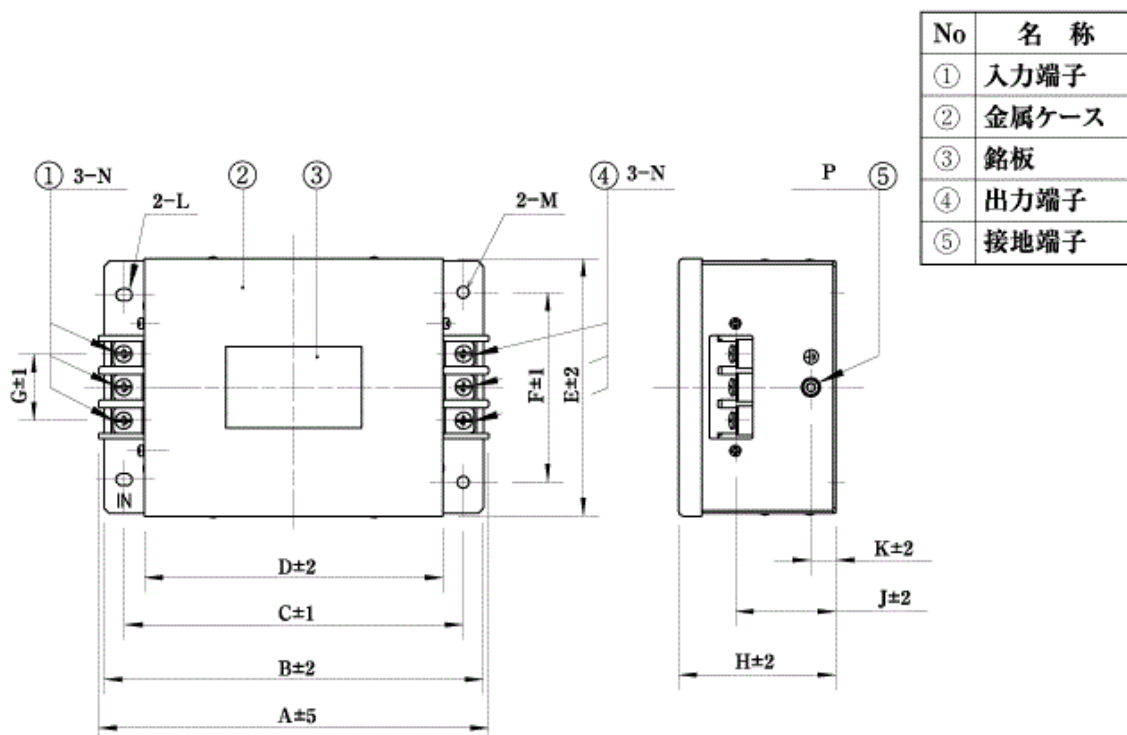
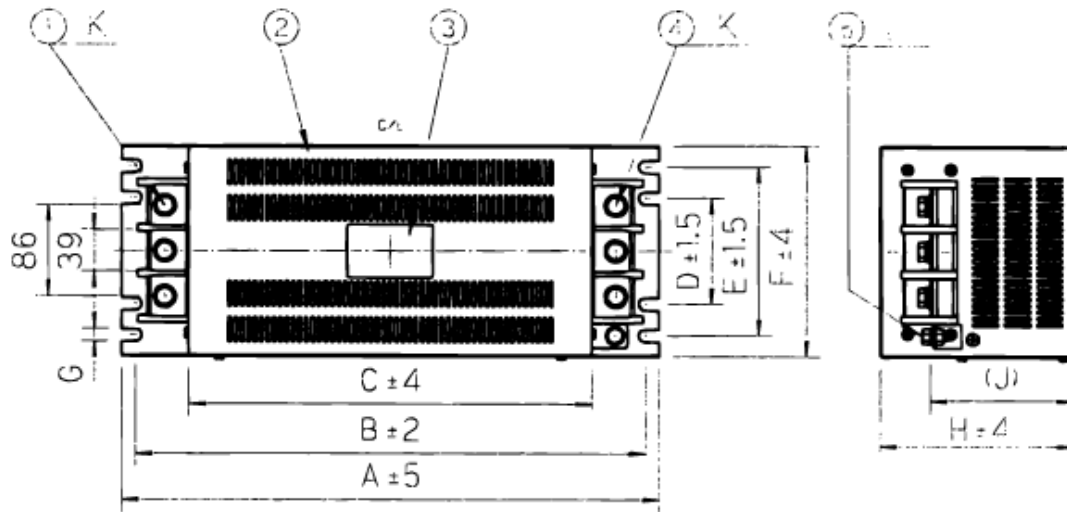
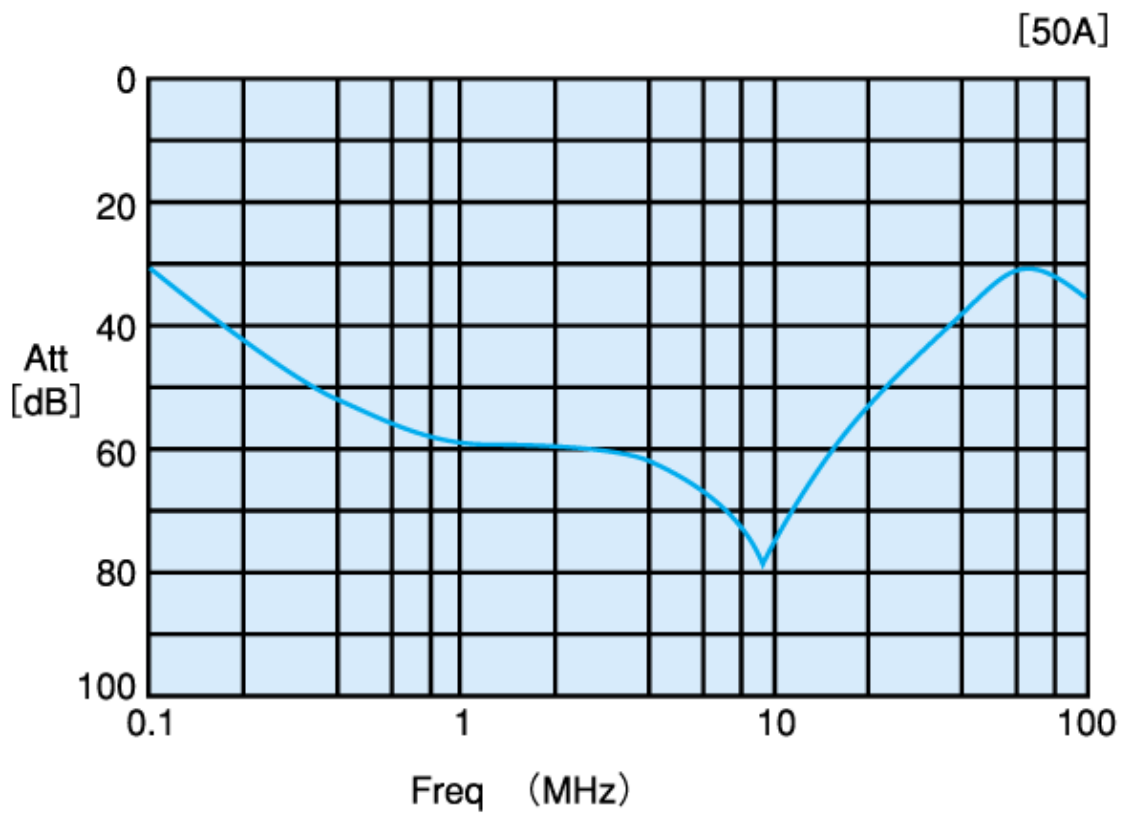
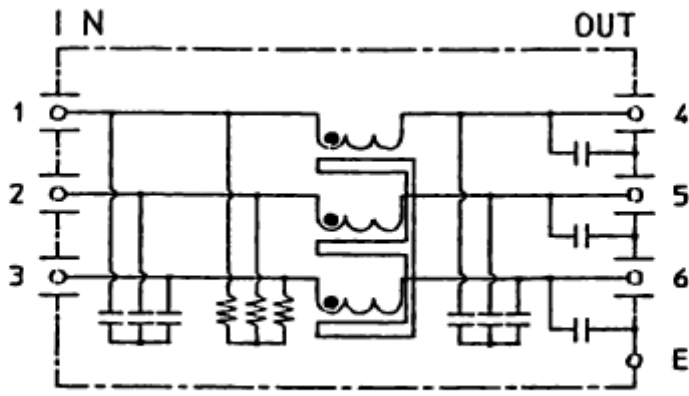
fig. 1 (10-150A)


fig. 2 (200, 250, 300A)

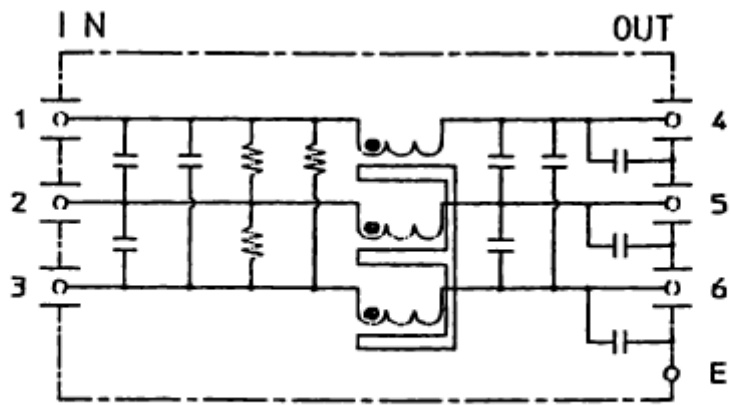


代表特性





10~150A



200~300A