

NF3000C-SFE Series (RoHS Compliant)

3-phase 3-line 500VAC

Downsizeing and low profile are realized.

Screw fall prevention function can be added. (option)

Circuit constant can be modified for optimization.



Type Approved
Safety
Regular Production
Surveillance
www.tuv.com
ID 2000000000

EN60939-3 (file No.R50366085)

UL60939-3 (file No.TU50429341)

CSA C22.2 No.8 (file No.CA72190703)

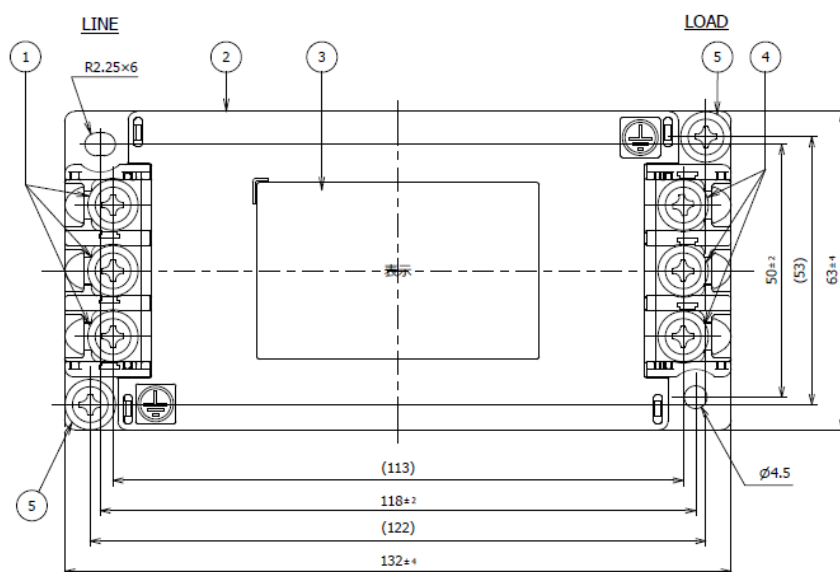
Applications

Semiconductor equipments, Machin tools, General-purpose inverters and servos
Power sources for CVCF, Power sources for elevators, Factories, etc.

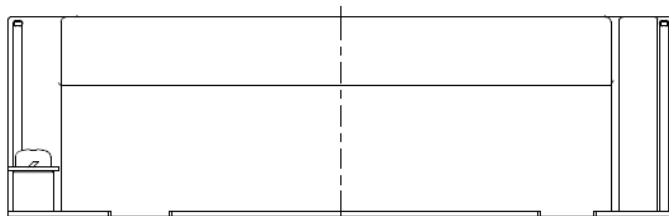
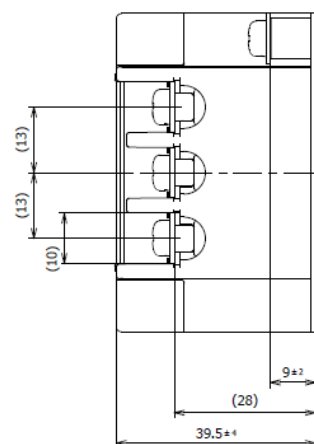
Specifications

Part No.	Rated Current	Weight	
NF3030C-SFE	30A	0.4kg	fig1
NF3060C-SFE	60A	0.9kg	fig2
Rated Voltage	500VAC		
Leakage Current	0.2mA MAX 500VAC 60Hz (By IEC60939-3) 3.3mA MAX 500VAC 60Hz (By UL60939-3)		
Ambient temp.	-20 up to 50 Deg.C		

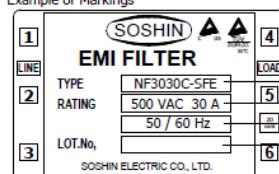
fig.1 (30A)



No	名称 Part name	仕様 Specification
1	入力端子 Input terminal	M4
2	ケース Case	
3	銘板 Name plate	
4	出力端子 Output terminal	M4
5	アース端子 Earth terminal	M4

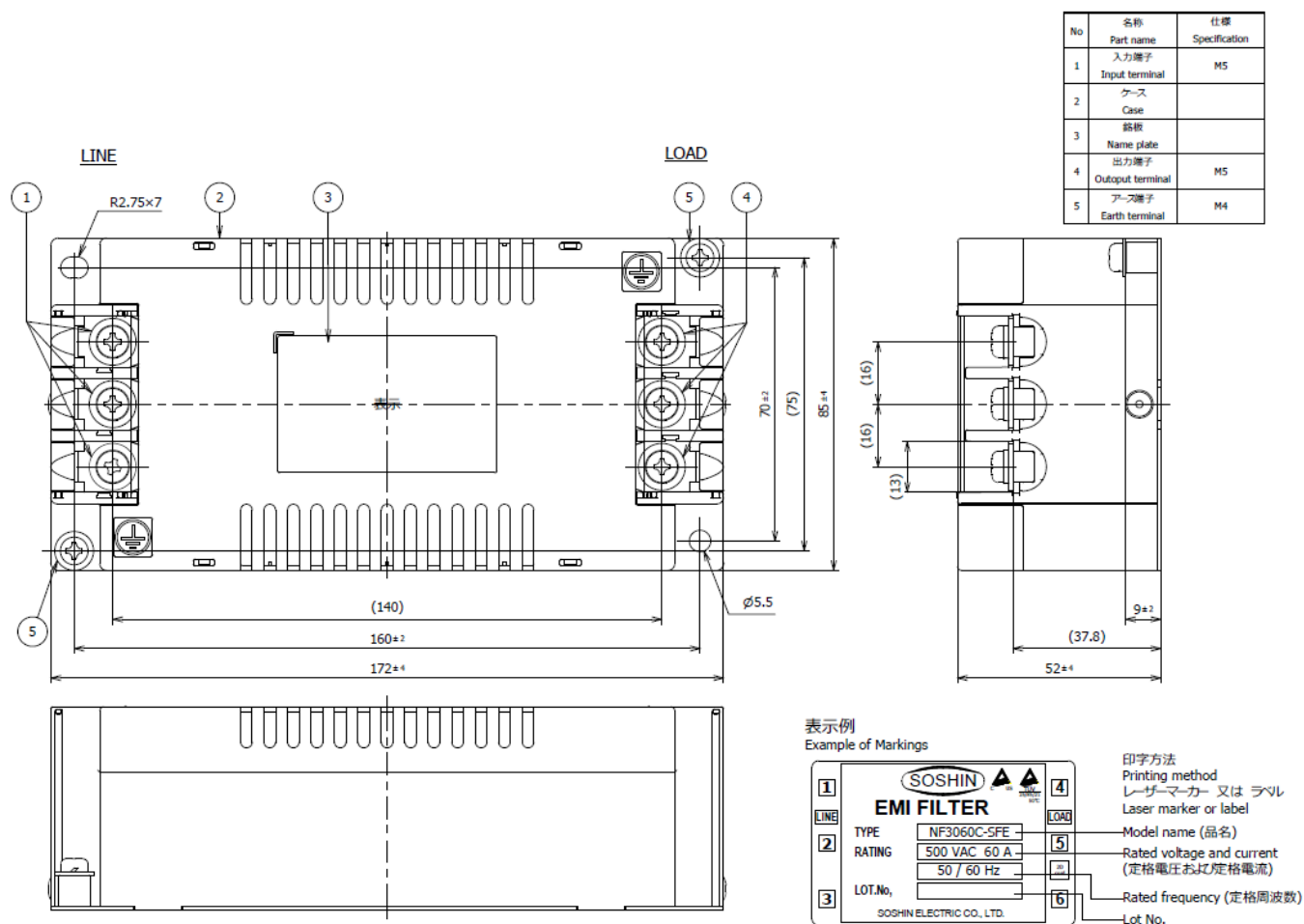


表示例
Example of Markings

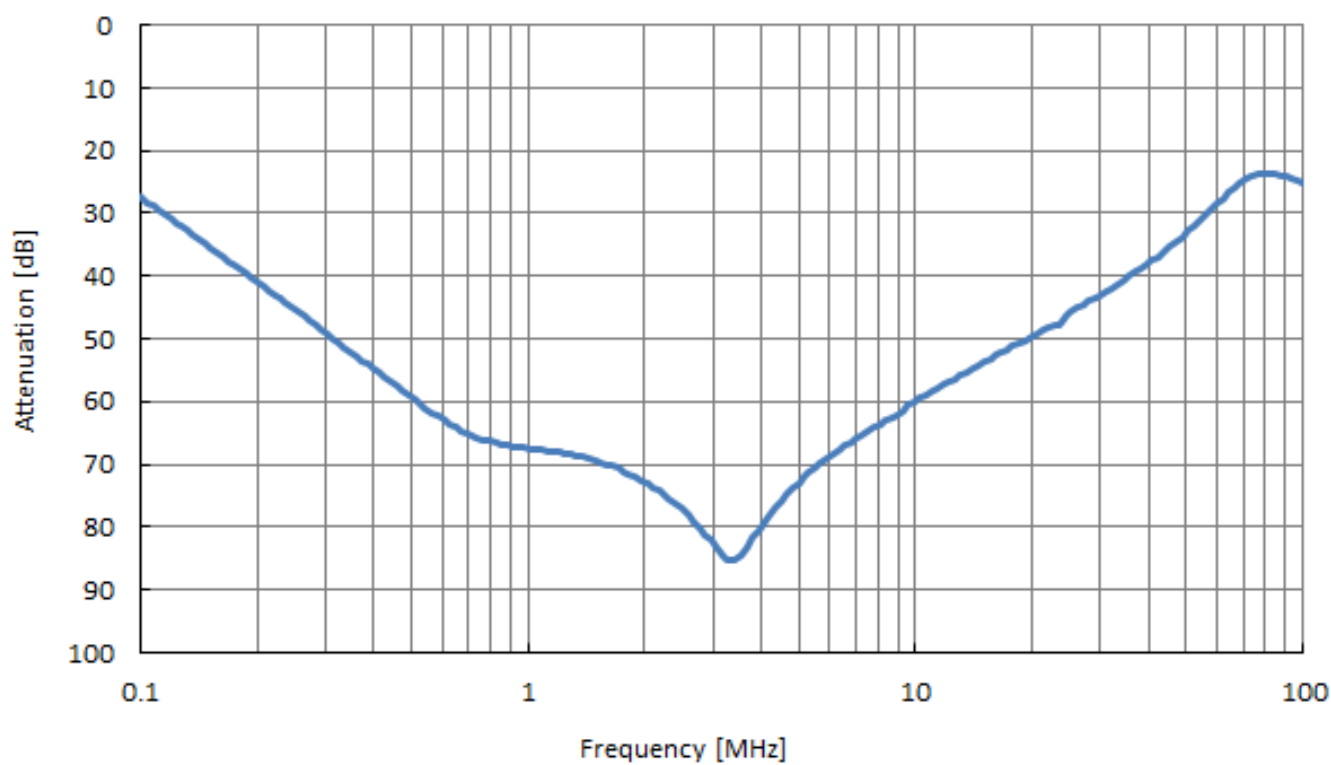


印字方法
Printing method
レーザーマーカ 又は ラベル
Laser marker or label
Model name (品名)
Rated voltage and current
(定格電圧および定格電流)
Rated frequency (定格周波数)
Lot No.

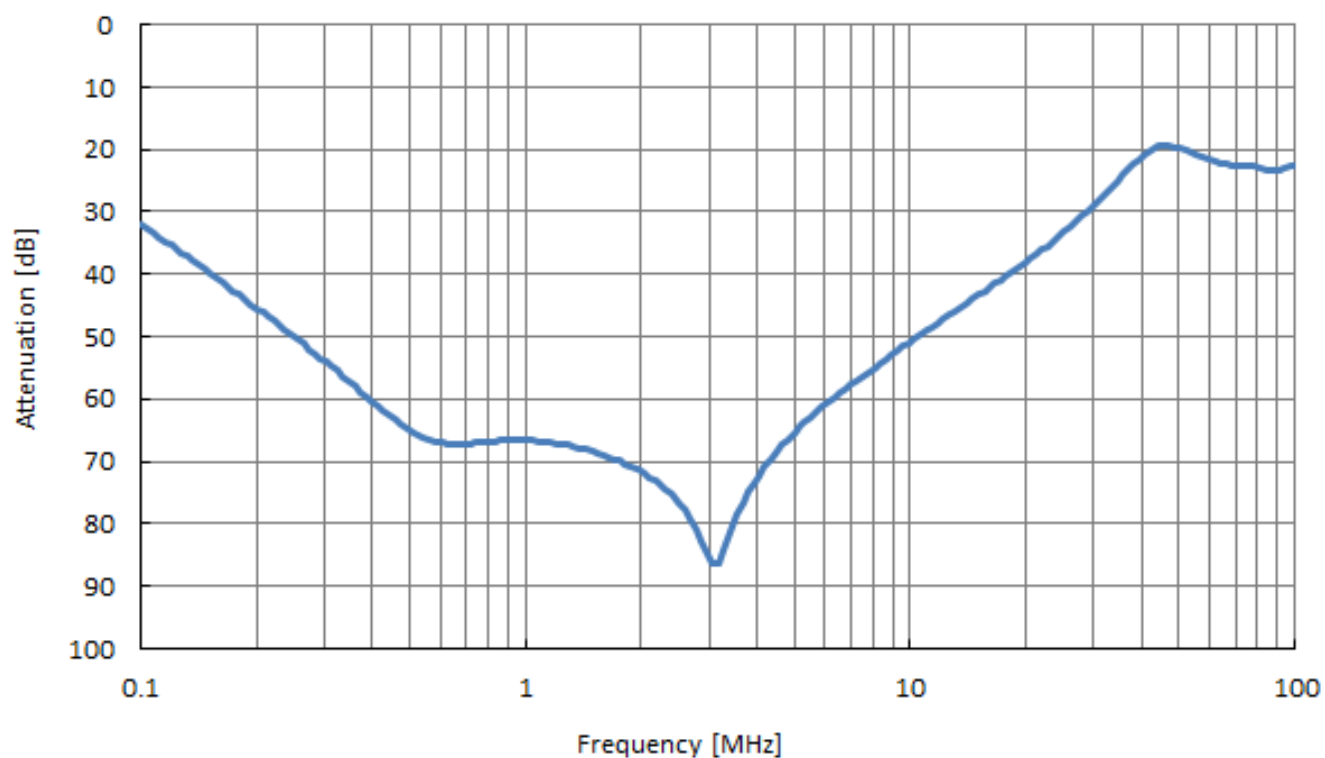
fig.2 (60A)



Characteristics (Typical) (30A)



Characteristics (Typical) (30A)



Circuit Diagram

