

HF3000C-SJB Series (RoHS Compliant)

3-phase 3-line 500VAC

For AC line, large solar system
Neutral point earth ground power source



UL1283 (file No.E102708)
EN60939-2 (file No.R50221930)

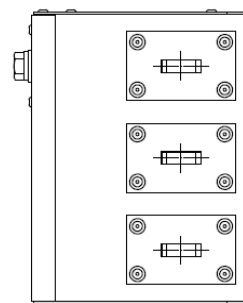
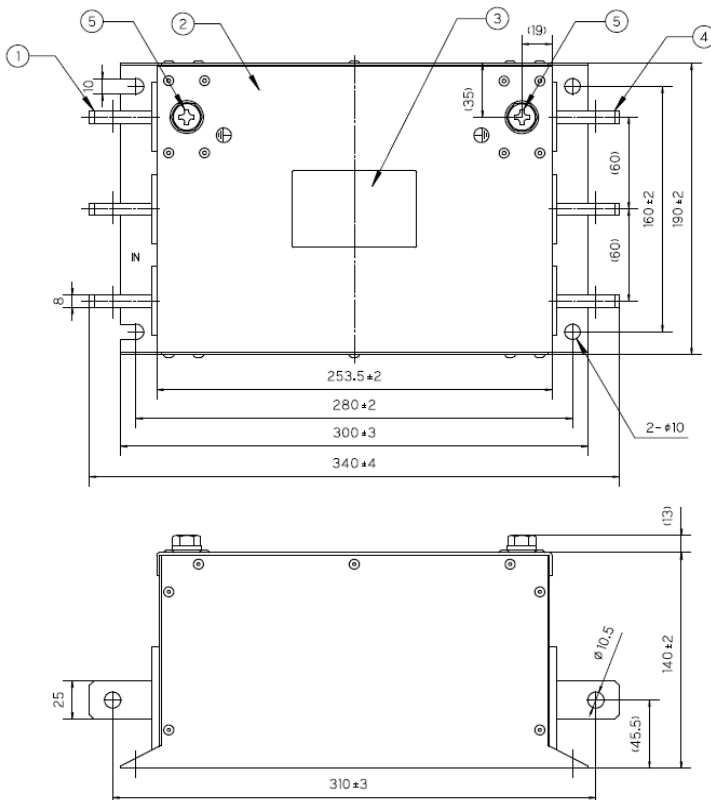
Applications

AC line, Large solar system

Specifications

Part No.	Rated Current	Weight	
HF3300C-SJB	300A	6.6kg	fig1
HF3600C-SJB	600A	6.6kg	
HF31000C-SJB	1000A	10kg	fig2
HF31200C-SJB	1200A	18kg	fig3
HF31600C-SJB	1600A	18kg	fig4
Rated Voltage	500VAC		
Leakage Current	375mA max 480VAC 60Hz By UL1283		
Ambient temp.	-25 up to 60 Deg.C		

fig.1 (300, 600A)



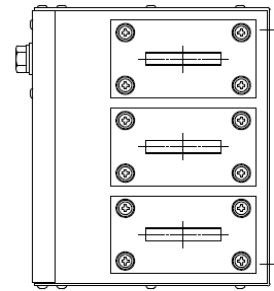
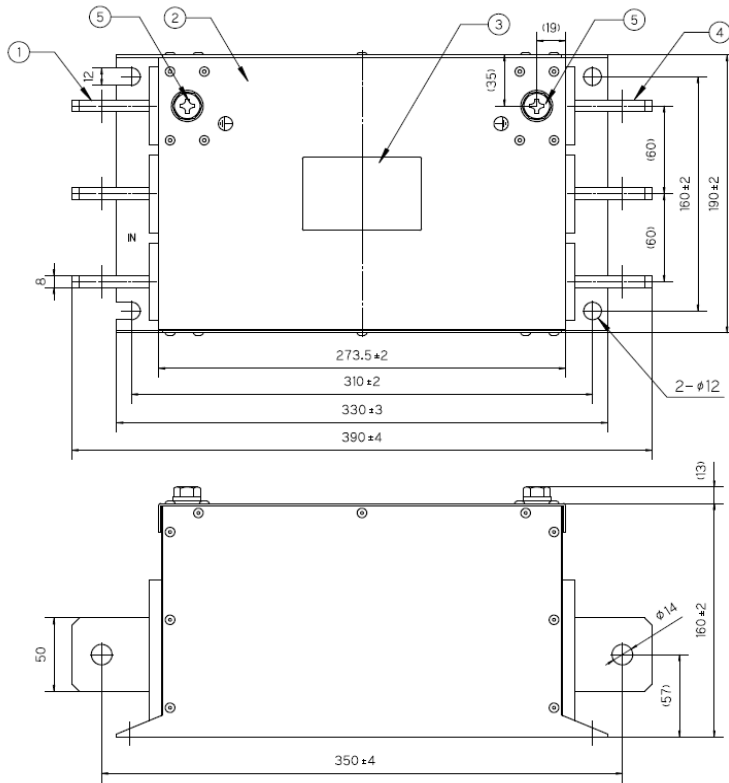
铭板表示例

1	SOSHIN	4
LINE	EMI FILTER	LOAD
2	TYPE HF3600C-SJB	5
	RATING 500 VAC 600 A	
	50 / 60 Hz	
3	LOT.NO.	6
SOSHIN ELECTRIC CO.,LTD.		

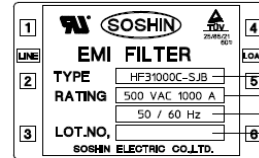
Model name (品名)
Rated voltage and Rated current
(定格電圧・電流 及 定格電流)
Rated frequency (定格周波数)
LOT.No.

No	名称 Item	材質 Material	備考 Notes
1	入力端子 INPUT terminal		φ10.5
2	金属ケース Metal case		
3	铭板 Label		
4	出力端子 OUTPUT terminal		φ10.5
5	接地端子 Earthing terminal		M10

fig.2 (1000A)



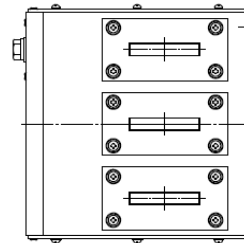
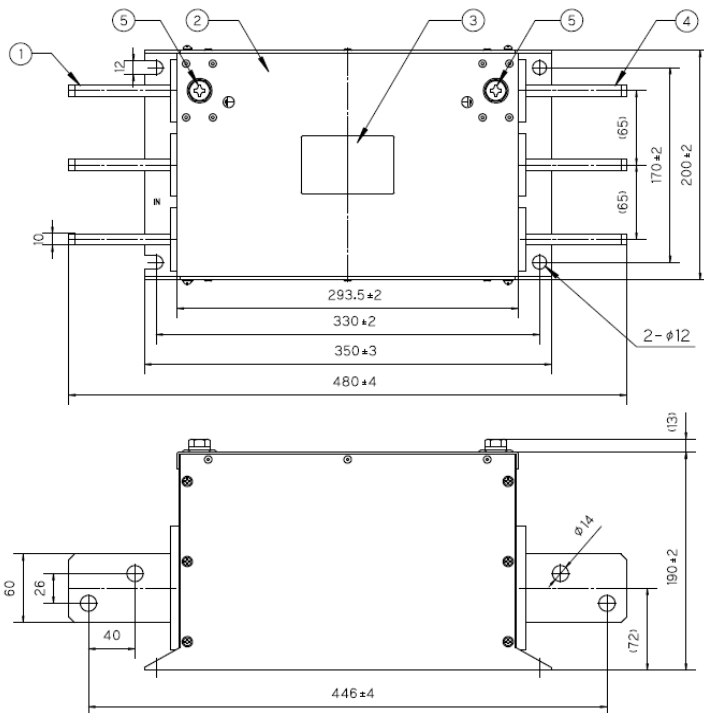
銘板表示例



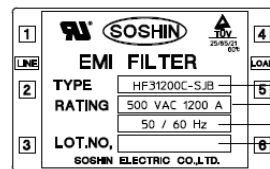
Model name (品名)
Rated voltage and Rated current
(定格電圧値 及び 定格電流値)
Rated frequency (定格周波数)
LOT.No.

No	名称 Item	材質 Material	備考 Notes
1	入力端子 INPUT TERMINAL		φ 14
2	金属ケース Metal case		
3	銘板 Label		
4	出力端子 OUTPUT TERMINAL		φ 14
5	接地端子 Earthing TERMINAL		M10

fig. 3 (1200A)



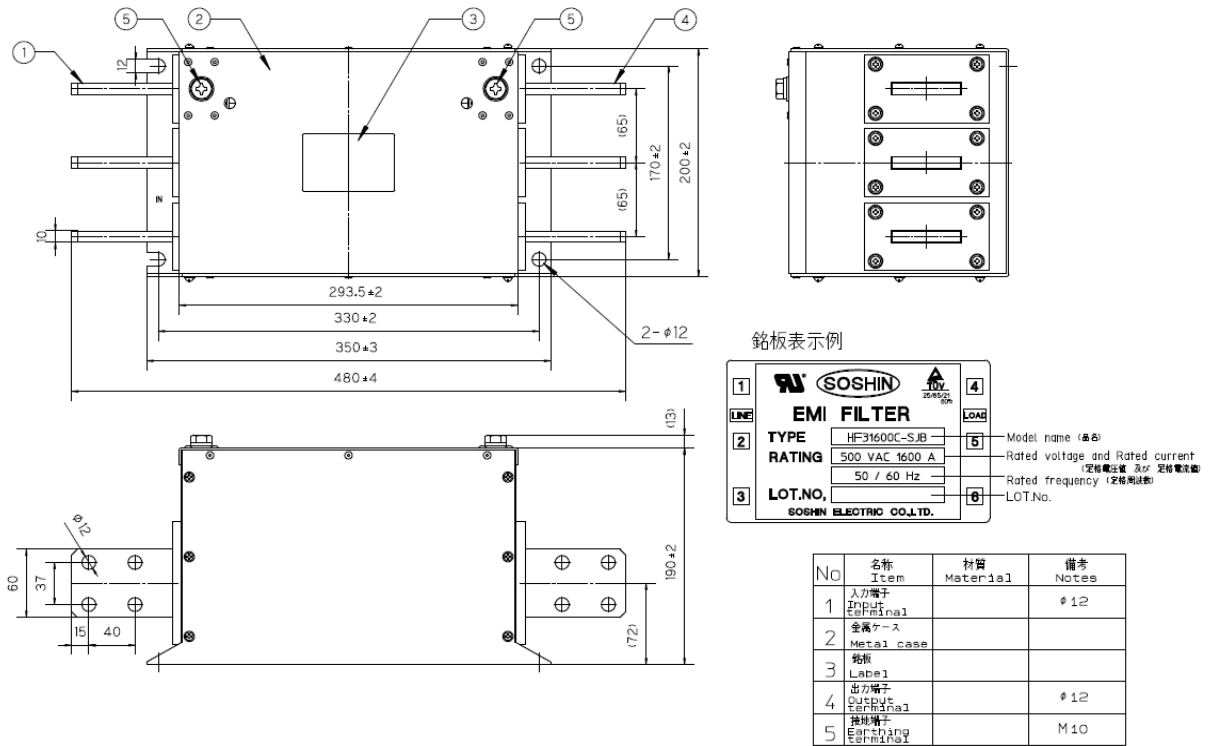
銘板表示例



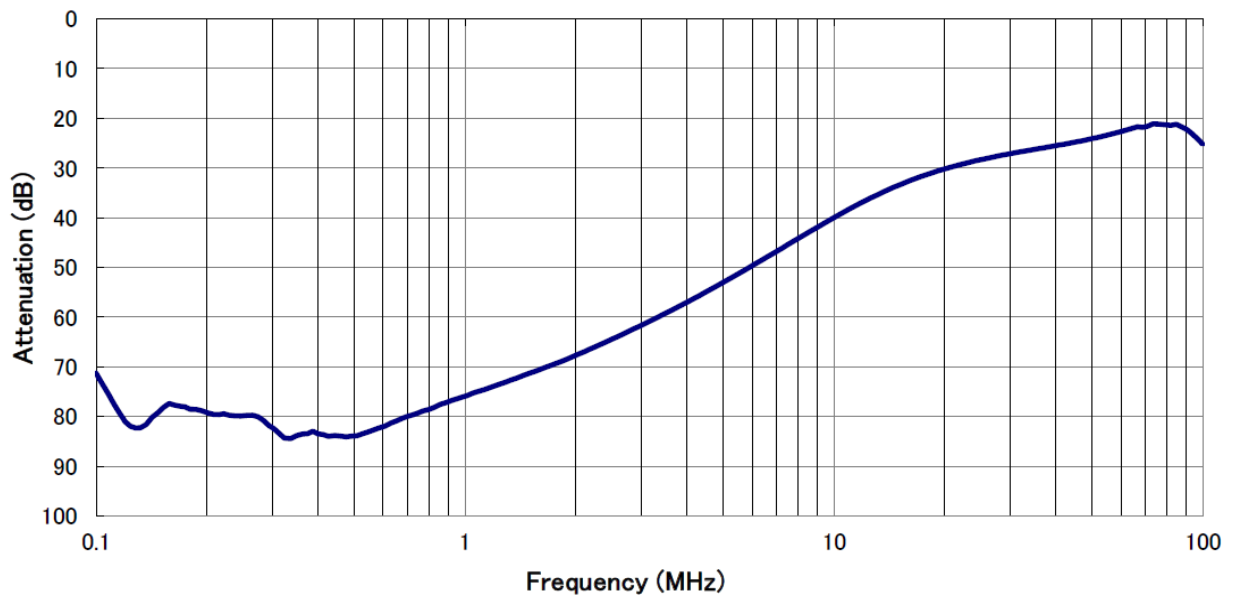
Model name (品名)
Rated voltage and Rated current
(定格電圧値 及び 定格電流値)
Rated frequency (定格周波数)
LOT.No.

No	名称 Item	材質 Material	備考 Notes
1	入力端子 INPUT TERMINAL		φ 14
2	金属ケース Metal case		
3	銘板 Label		
4	出力端子 OUTPUT TERMINAL		φ 14
5	接地端子 Earthing TERMINAL		M10

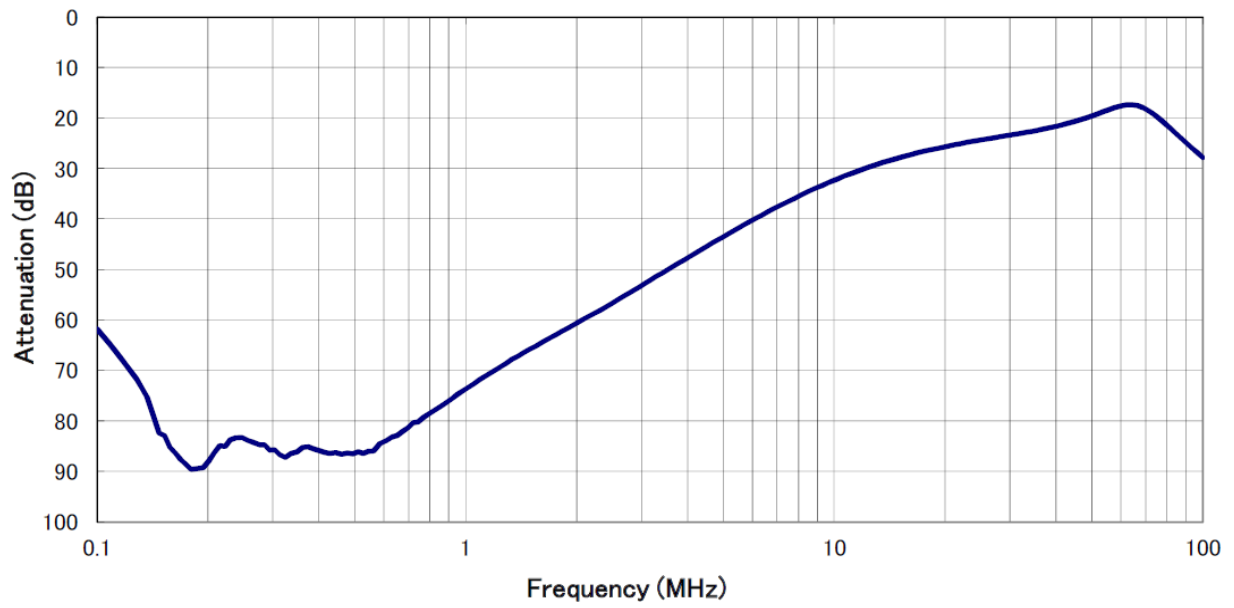
fig. 4 (1600A)



Characteristics (Typical) (600A)



Characteristics (Typical) (1600A)



Circuit Diagram

