

NF2000H-WP Series (RoHS Compliant)

DC 48VDC

For DC Only



UL1283 (File No.E102708)

Applications

For Power distribution unit, FFTU

Specifications

Part No.	Rated Current	Weight	
NF2040H-WP	40A	0.3Kg	fig1
NF2060H-WP	60A	0.8Kg	fig2
NF2090H-WP	90A	1.2Kg	fig3
Rated Voltage	48VDC (36-72 VDC max)		
Ambient temp.	-25 up to 70 Deg.C		

fig.1 (40A)

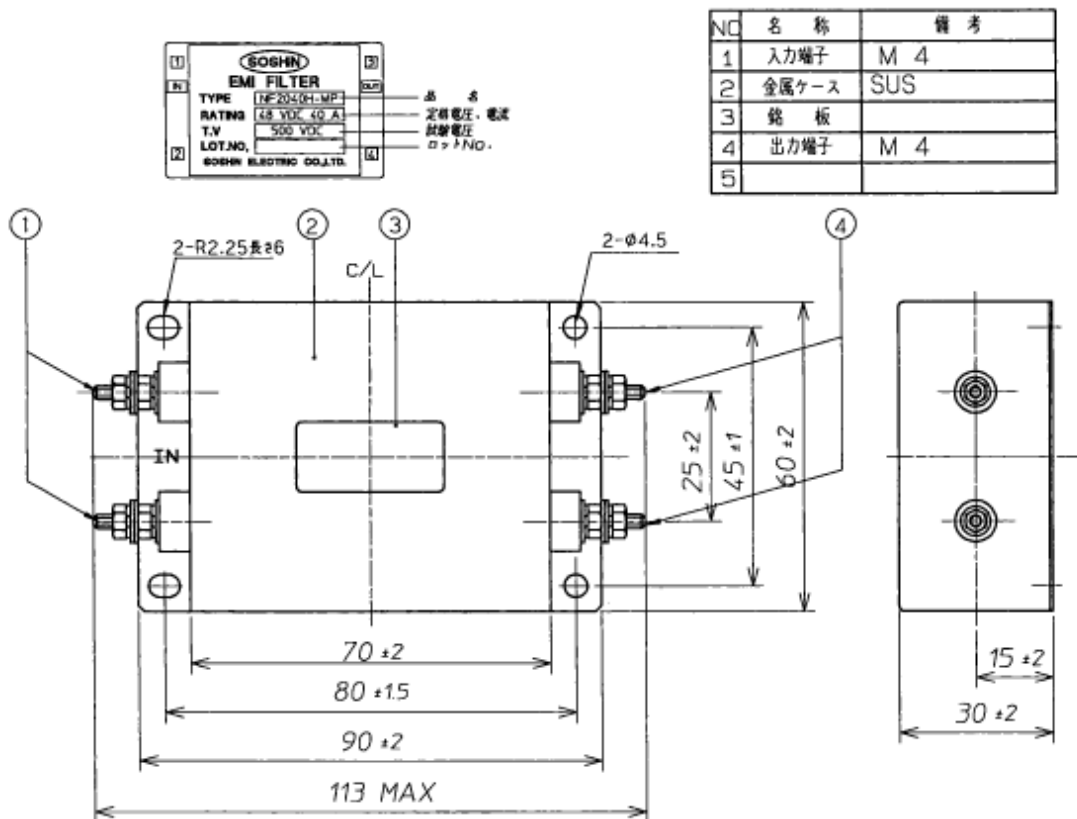
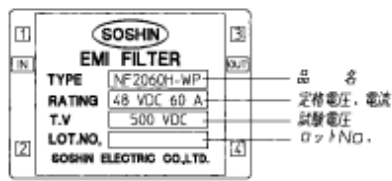


fig.2 (60A)



NO	名称	備考
1	入力端子	M6
2	金属ケース	SUS
3	銘板	
4	出力端子	M6
5		

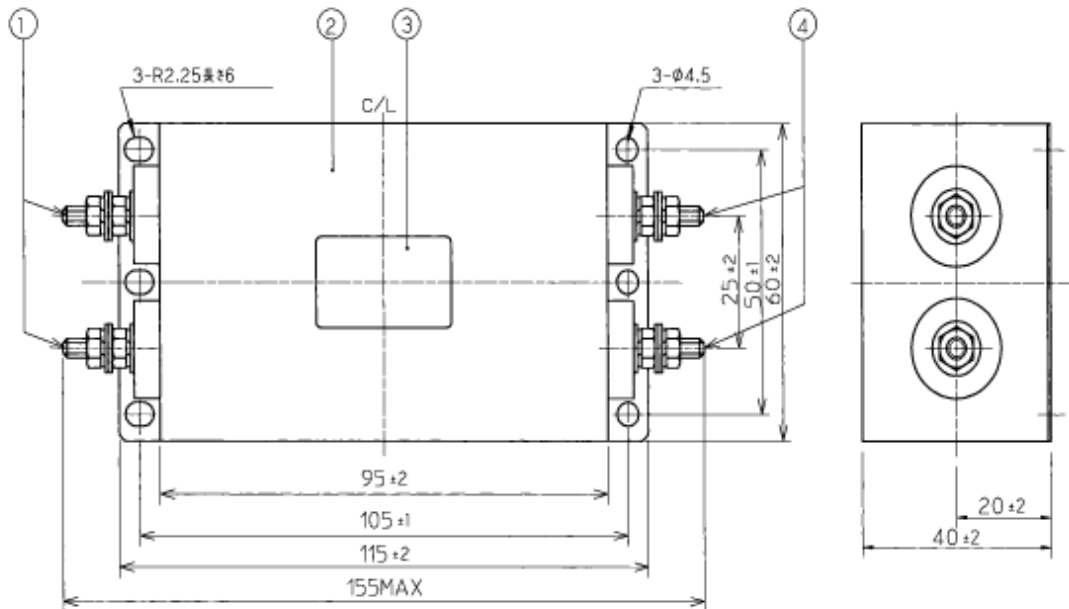
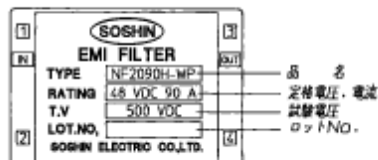
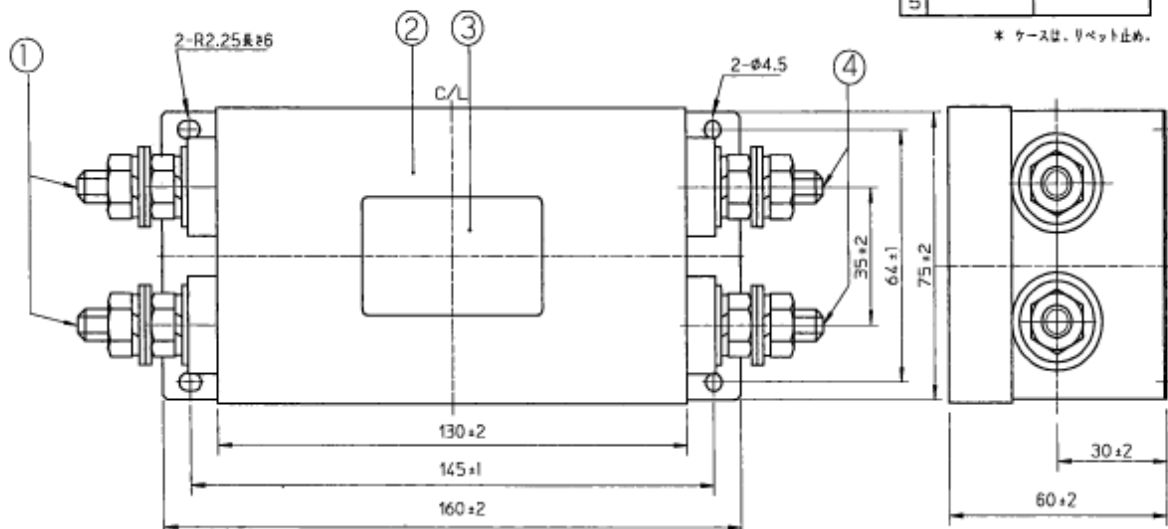


fig. 3 (90A)



NO	名称	備考
1	入力端子	M8
2	金属ケース	SUS
3	銘板	
4	出力端子	M8
5		

* ケースは、リベット止め。



Circuit Diagram

