

Product Information

Control No. : ARP-4670800-K 1

Issued on July 22, 2020

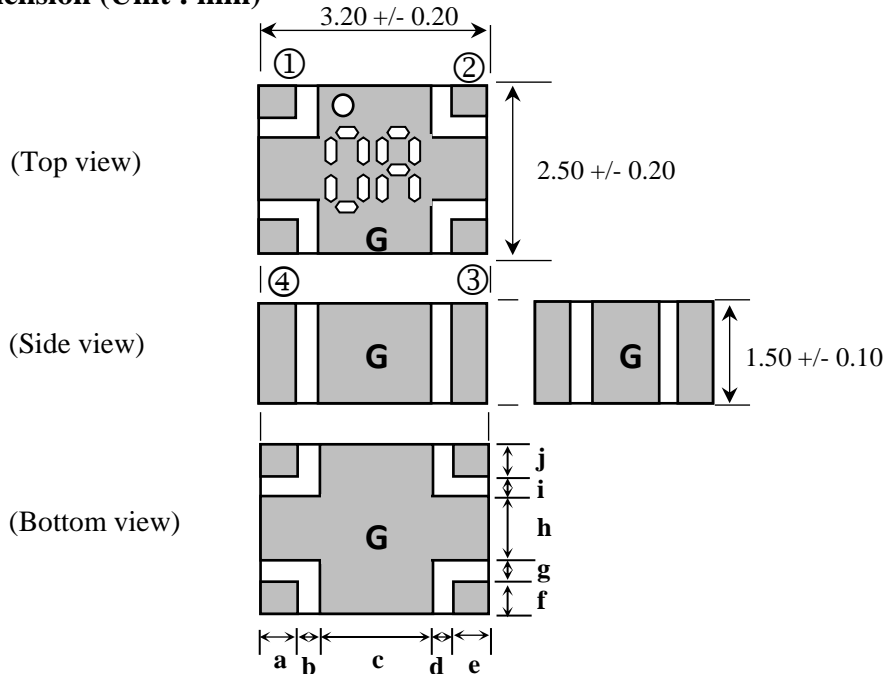
Application : 3dB 90deg Hybrid Coupler for 1700-2700MHz

1. Type No.

HMD6708D-HYB2200

RoHS Compliant Part

2. Dimension (Unit : mm)



Terminal	
①	IN
②	ISOLATION
③	OUT(90deg)
④	OUT(0deg)
G	GND

Terminal Dimensions	
a	0.52 +/- 0.10
b	0.30 +/- 0.10
c	1.56 +/- 0.10
d	0.30 +/- 0.10
e	0.52 +/- 0.10
f	0.49 +/- 0.10
g	0.30 +/- 0.10
h	0.92 +/- 0.10
i	0.30 +/- 0.10
j	0.49 +/- 0.10

3. Electrical characteristics

Parameter		Band1	Band2	Unit
Pass band frequency	Specification	1700-2700	1700-2300	MHz
Nominal impedance	Specification	50	50	ohm
Input port VSWR	Specification	1.22 Max.	1.22 Max.	-
	Typical	1.15	1.15	
Isolation	Specification	20.0 Min.	20.0 Min.	dB
	Typical	23.5	23.5	
Insertion Loss at 25degC.	Specification	0.25 Max.	0.20 Max.	dB
	Typical	0.14	0.09	
Amplitude balance	Specification	0.7 Max.	0.7 Max.	dB
	Typical	0.34	0.34	
Phase balance	Specification	90 +/- 5	90 +/- 5	deg
	Typical	91.4	90.7	

4. Note

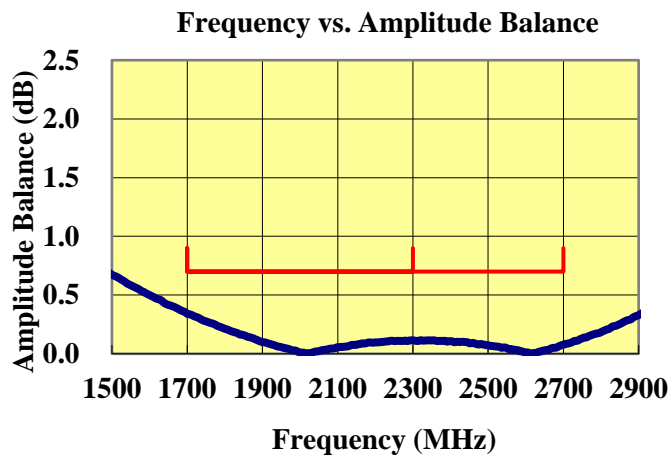
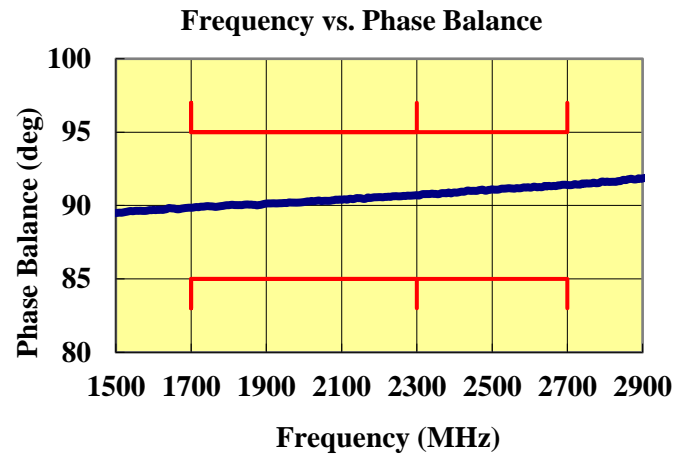
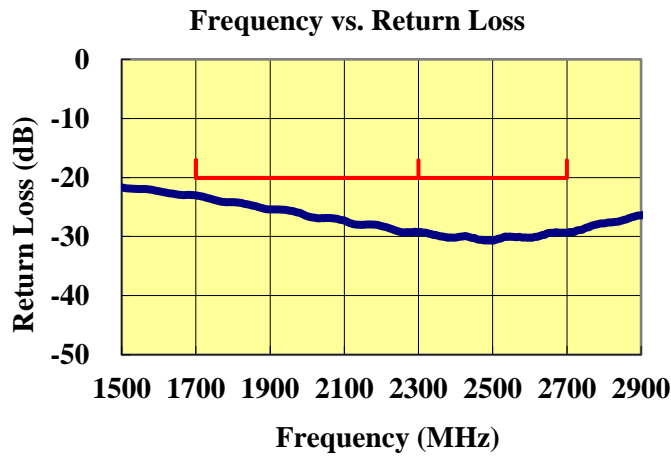
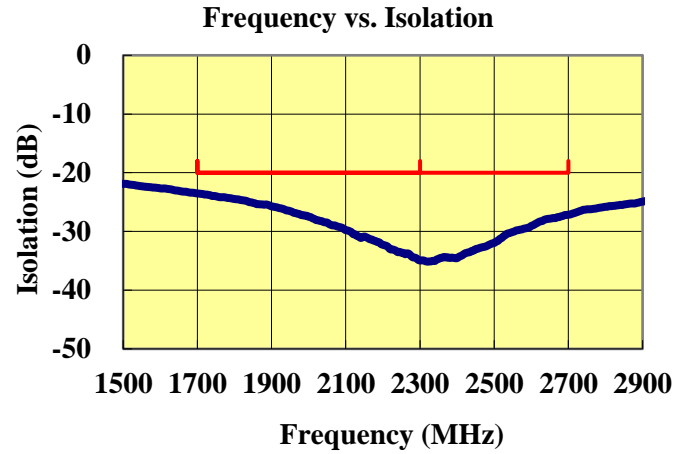
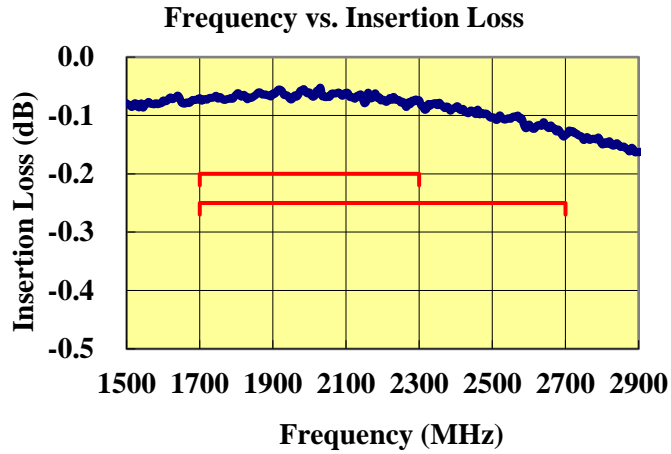
- | | |
|---------------------------------|--|
| 4.1 Operating Temperature Range | : -55 to +105 deg.C |
| 4.2 Storage Temperature Range | : -20 to +35 deg.C (In a Taping Package) |
| 4.3 Max Input Power | : 50W Avg/CW |
| 4.4 Standard Reel Quantity | : 2,000 pcs (per reel, per bag) |

Approved by	Confirmed by	Raised by
Y. Imai	T. Hasegawa	M. Aiba

SOSHIN ELECTRIC CO., LTD

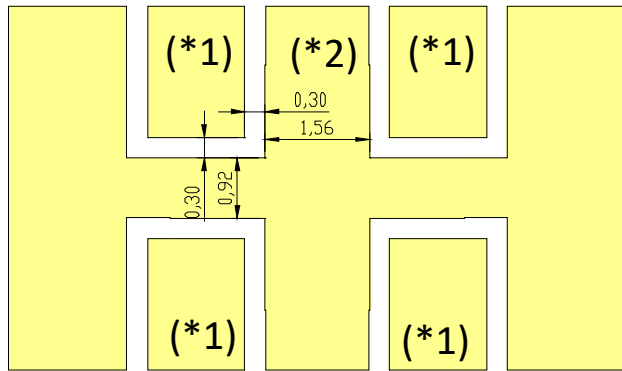
5.Representative characteristics

Measured data

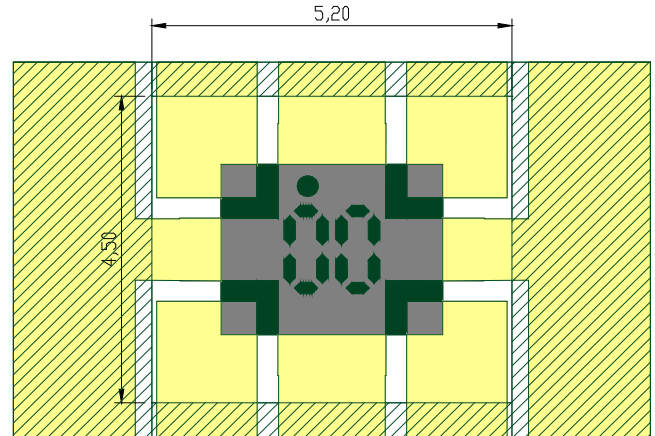


6.Recommended Land Pattern (Unit:mm)

*Land Pattern



*Resist Pattern



*1 50 ohm impedance Line

*2 Ground Plane

7.Power Derating Curve

